

Flowers For Pollinators

Planting a mix of UK native and non-native flowering plants in your garden will provide nectar and pollen for a wide variety of insect species. This will make it a wildlife friendly habitat and a bright, colourful space for you to watch grow and enjoy. This guide illustrates which are the best plants for pollinators according to time of year.



Spring: Flowering March to May

Small flowering plants:



Primrose (*Primula vulgaris*)



Sweet William (*Dianthus barbatus*)



Native bluebells (*Hyacinthoides non-scripta*)



Bugle (*Ajuga reptans*)



Forget-me-not (*Myosotis sylvatica*)



Cuckoo flower (*Cardamine pratensis*)



Flowering Currant (*Ribes sanguineum*)

Medium - sized shrubs and trees:



Crab apple (*Malus sylvestrus*)



Goat willow (*Salix caprea*)



Pear (*Pyrus* sp.)



Wild cherry (*Prunus avium*)



Plum (*Prunus domestica*)



Early Summer: Flowering May to July



Small flowering plants:



Oxeye daisy
(*Leucanthemum vulgare*)



Common Knapweed
(*Centaurea nigra*)



Scabious
(*Scabiosa* Sp.)



Bird's-foot trefoil
(*Lotus corniculatus*)



Bird vetch
(*Vicia cracca*)



Comfrey
(*Symphytum* sp.)



Heather (*Calluna vulgaris*)



Granny's Bonnet
(*Aquilegia* Sp.)



Everlasting pea
(*Lathyrus latifolius*)



Cranesbill
(*Geranium* Sp.)



Clover (*Trifolium* Sp.)



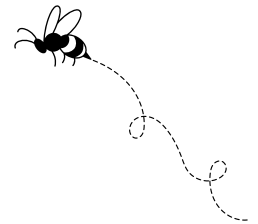
Bellflower
(*Campanula* Sp.)



Red Campion (*Selene dioica*)



Wallflower
(*Erysimum* Sp.)



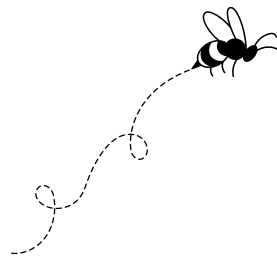
Shrubs:



Blackthorn (*Prunus spinosa*)



Elder (*Sambucus nigra*)



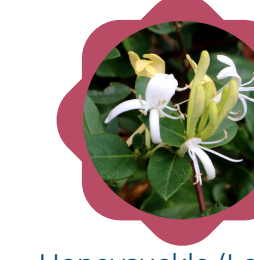
Climber:



Hawthorne (*Crataegus monogyna*)



Dog Rose (*Rosa canina*)



Honeysuckle (*Lonicera* Sp.)

Herbs:



Thyme



Marjoram



Lavender



Sage

Late Summer - Autumn: Flowering July to October



Asters



Cornflower
(*Centaurea cyanus*)



Fennel (*Foeniculum
vulgre*)



Globe thistle
(*Echinops ritro*)



Hebe



Buddleia



Verbena



Bramble (*Rubus Sp*)



Catmint (*Nepeta Sp.*)



Hemp agrimony
(*Eupatorium
cannabinum*)



Hyssop (*Hyssopus
officinalis*)



Red valerian
(*Centranthus ruber*)



Vipers Bugloss
(*Echium vulgare*)



Phlox (*Phlox
paniculata*)



Purple loosestrife
(*Lythrum salicaria*)



Teasel (*Dipsacus
fullonum*)



Scorpion weed
(*Phacelia tanacetifolia*)



Thistles



Sunflowers



Dark Mullein
(*Verbascum nigrum*)

Caterpillar Foodplants:



COMMON BLUE BUTTERFLY



Bird's foot trefoil (*Lotus corniculatus*)



ORANGE TIP BUTTERFLY



Garlic mustard (*Alliaria petiolata*)



Cuckoo Flower (*Cardamine pratensis*)



SMALL COPPER BUTTERFLY



Common sorrel (*Rumex acetosa*)



Fescue grass (*festuca Sp*)



MEADOW BROWN BUTTERFLY



SMALL WHITE BUTTERFLY



Holly (*Ilex aquifolium*)



HOLLY BLUE BUTTERFLY



Ivy (*Hedera helix*)



Nasturtium (*Tropaeolum majus*)



GREEN VEINED WHITE BUTTERFLY





SMALL
TORTOISESHELL



COMMA BUTTERFLY



RED ADMIRAL BUTTERFLY



Stinging nettles
(*Urtica dioica*)



PEACOCK
BUTTERFLY



SMALL SKIPPER
BUTTERFLY



SPECKLED WOOD
BUTTERFLY



BRIMSTONE
BUTTERFLY



Yorkshire Fog
Grass (*Holcus
lanatus*)



MARbled WHITE BUTTERFLY



Alder buckthorn
(*Frangula alnus*)